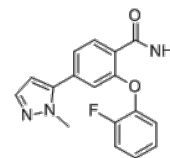


**Product Name** : RBPJ Inhibitor 1  
**Cat. No.** : PC-73042  
**CAS No.** : 2682114-39-0  
**Molecular Formula** : C<sub>17</sub>H<sub>14</sub>FN<sub>3</sub>O<sub>2</sub>  
**Molecular Weight** : 311.316  
**Target** : Notch  
**Solubility** : 10 mM in DMSO



## Biological Activity

RBPJ Inhibitor 1 (RIN1) is a small molecule inhibitor that disrupts the interaction between **NOTCH** and **RBPJ**, inhibits RBPJ-VP16-dependent Hes1-Luciferase in AD-293 cells with IC<sub>50</sub> of 0.2 μM.

RIN1 inhibited NOTCH2 ICD Hes1-Luciferase activity in NOTCH2 ICD transiently expressed AD-293 cells with IC<sub>50</sub> of 0.18 μM, also inhibited NOTCH3 ICD with similar potency (IC<sub>50</sub>=0.19 μM).

RIN1 inhibited the proliferation of hematologic cancer cell lines and promoted skeletal muscle differentiation from C2C12 myoblasts.

RIN1 inhibits the functional association of RBPJ with SHARP and NOTCH ICD, thereby blocking the transcriptional repression and activation, respectively, of downstream genes.

RIN1 is the first small molecule inhibitor of RBPJ signaling.

## References

Hurtado C, et al. *Sci Rep.* 2019 Jul 25;9(1):10811.

**Caution: Product has not been fully validated for medical applications. Lab Use Only!**

E-mail: tech@probechem.com